

EXHIBIT "A"

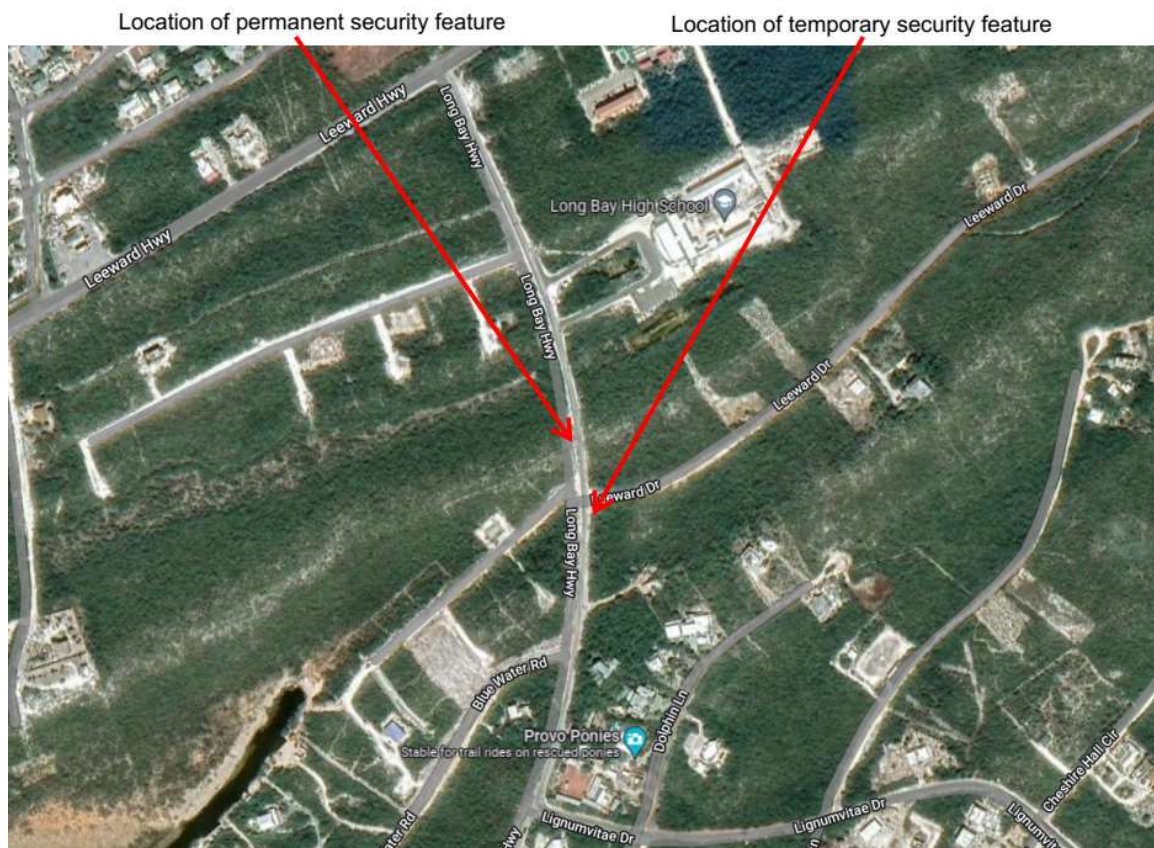
SECURITY MATTERS

SHORT TERM:

Starting November 1st until a mid-term solution is in place, there will be a manned security car with flashing lights at the corner of Long Bay Highway and Leeward Drive (see map below) from 8pm till 6am daily. The car will be in communication with the police and other WCSS security officers in Long Bay that are currently retained by homeowners to patrol Long Bay Beach Drive.

MID TERM:

We are looking to acquire a 10x12 prefab structure that we hope to locate on that same corner of Long Bay Highway and Leeward Drive. The plan is that this will be a temporary security hut to remain in place until the permanent security hut described below is completed. This temporary structure is anticipated to have power, road lighting and CCTV cameras and will be manned by security officers from WCSS, the same company that is retained by homeowners to currently patrol Long Bay Beach Drive.



LONG TERM:

The permanent security hut for the community is planned for a location in the center of the road at the entrance of the subdivision (the "pinchpoint" between the cliffs where the first speed bump is located). It will have solar panels on the roof, lighting, cameras and good visibility of incoming and outgoing traffic. The schematic drawings are attached.



LONG BAY SECURITY HUT • VIEWS



LONG BAY SECURITY HUT • VIEWS



LONG BAY SECURITY HUT • VIEWS



LONG BAY SECURITY HUT • VIEWS

Blee
Halligan